

# CloudEngine S5700 Series Switches Hardware Description (V600)

Search this document. 0 / 500 

Please evaluate and leave your comments: ☆ ☆ ☆ ☆ ☆

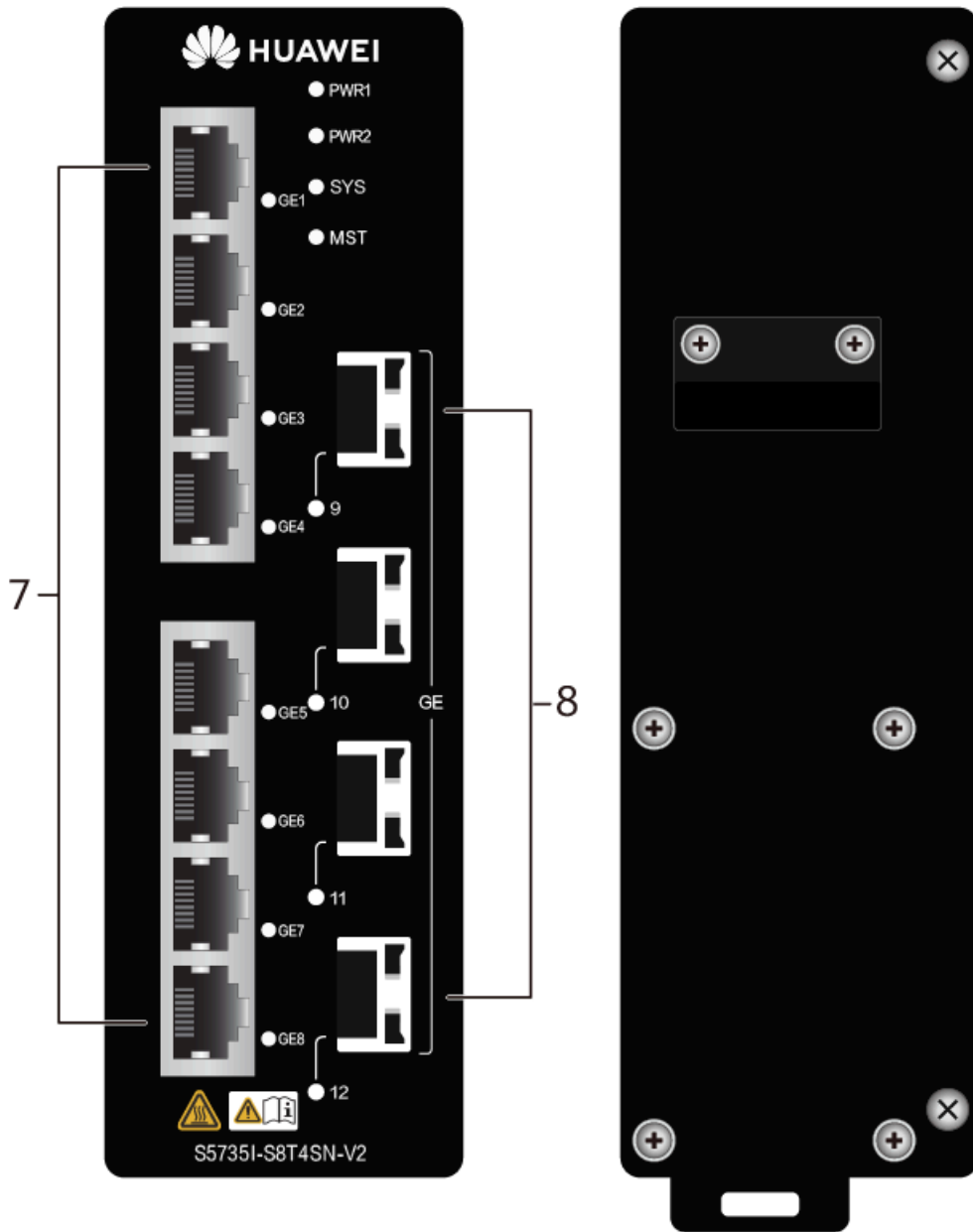
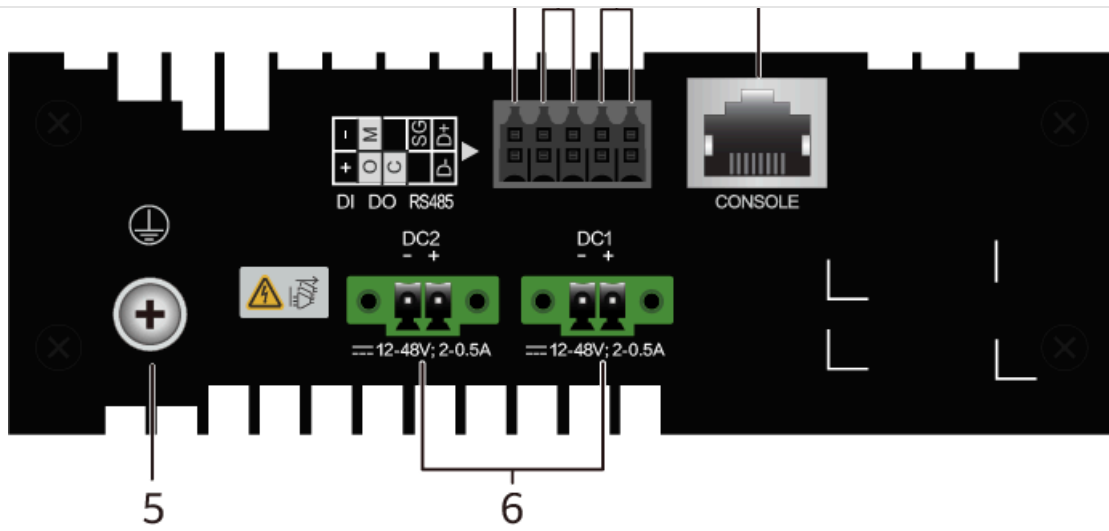
## S5735I-S8T4SN-V2 (98012086)

### Overview

**Table 4-1337** Basic information about the S5735I-S8T4SN-V2

| Item                    | Details  |
|-------------------------|--|
| Description             | S5735I-S8T4SN-V2 (8*10/100/1000BASE-T ports, 4*GE SFP ports, DIN Rail Mounting, Dual redundant 9.6 to 60V DC power, Fanless) |
| Part Number             | 98012086   |
| Model                   | S5735I-S8T4SN-V2   |
| First supported version | V600R022C01  |

### Components

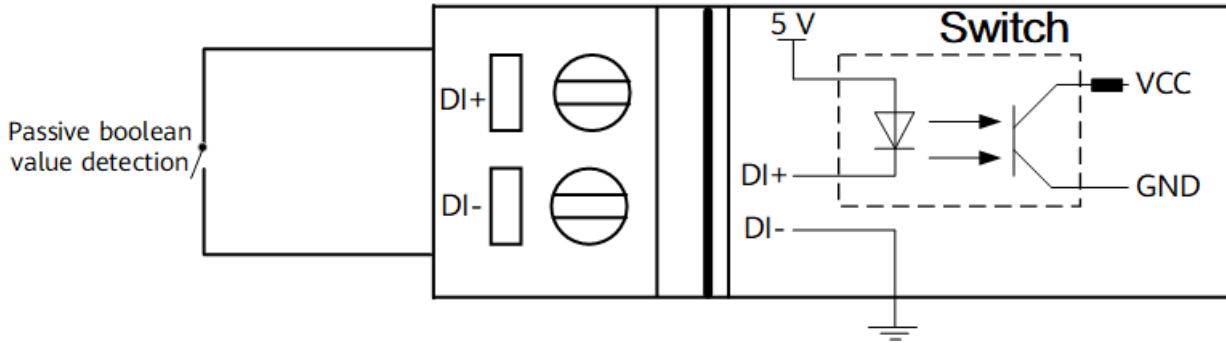


|   |            |   |                  |
|---|------------|---|------------------|
| 1 | DI port    | 2 | DO port          |
| 3 | RS485 port | 4 | One console port |

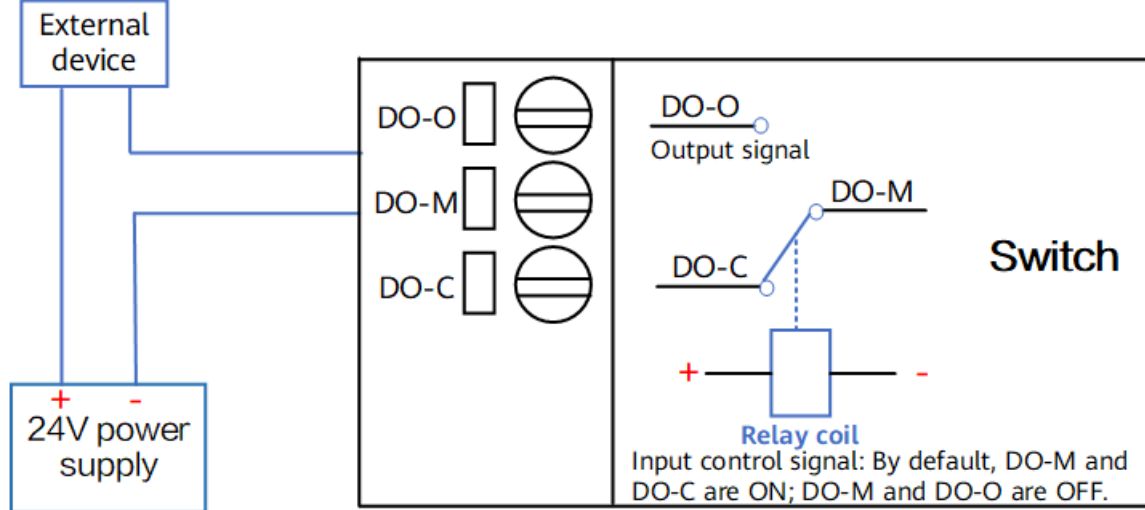
|   |   |   |   |
|---|---|---|---|
|   | <p><b>NOTE:</b></p> <p>It is used with a <b>ground cable</b>.</p> <hr/> |   | <p><b>NOTE:</b></p> <p>Applicable external power module:<br/><b>PAC60S12-AN</b></p> <hr/> |
| 7 | Eight 10/100/1000BASE-T ports   | 8 | Four 1000BASE-X ports   |

**Ports**

**Figure 4-418** Typical connections of the DI port



**Figure 4-419** Typical connections of the DO port



**Table 4-1338** Ports on the S5735I-S8T4SN-V2

| Port                   | Connector Type | Description   | Available Components   |
|------------------------|----------------|---|--|
| 10/100/1000BASE-T port | RJ45           | A 10/100/1000BASE-T Ethernet electrical port sends and receives service data at 10/100/1000 Mbit/s. | <b>Ethernet cable</b>  |
| 1000BASE-X port        | SFP            | A 1000BASE-X port can send and receive data at 1000 Mbit/s.   | <ul style="list-style-type: none"> <li><b>Industrial optical modules (only optical modules with 1 Gbit/s transmission speed and transmission distances less than or equal to 10 km are supported)</b></li> <li><b>3 m SFP+ high-speed copper cables (supported in V600R022C10 and later versions, only used for stack connection)</b></li> <li><b>0.5 m and 1.5 m SFP+ dedicated stack cables</b></li> </ul> |

|              |                           |  |   |
|--------------|---------------------------|--|---|
|              |                           |  | versions, only used for stack connection; zero-configuration stacking supported from V600R023C00) |
| Console port | RJ45                      | The console port is connected to a console for on-site configuration.  | Console cable   |
| RS-485 port  | 2x5-Pin Phoenix Connector | <p>The RS-485 port is used for data collection.</p> <ul style="list-style-type: none"> <li>Standards compliance: RS-485</li> <li>Working mode: Half-duplex</li> <li>Supported rates: 1200 bit/s, 2400 bit/s, 4800 bit/s, 9600 bit/s, 19200 bit/s, 38400 bit/s, 57600 bit/s, and 115200 bit/s</li> <li>Maximum number of nodes that can be mounted: 64</li> <li>Maximum communication distance: 1 km @ 9600 bit/s</li> </ul> <p>The default configurations of the RS-485 port are as follows:</p> <ul style="list-style-type: none"> <li>Baud rate: 9600 bit/s</li> <li>Flow control: None</li> <li>Parity check: None</li> <li>Stop bits: 1</li> <li>Data bits: 8</li> </ul> | 2x5-Pin Phoenix Connector   |
| DI port      | 2x5-Pin Phoenix Connector | <p>The DI port is used to check remote communication input and level signals.</p> <p>Signal type: Passive DI signals, Boolean value (short circuit and open circuit)</p>   | 2x5-Pin Phoenix Connector   |
| DO port      | 2x5-Pin Phoenix Connector | <p>The DO port outputs signals so that the connected device can take corresponding actions.</p> <p>Signal type: Passive DO signals, Boolean value (short circuit and open circuit)</p> <p>External power supply: voltage less than 60 V DC and circuit current less than 0.5 A</p>   | 2x5-Pin Phoenix Connector   |

### Indicators and Buttons

The S5735I-S8T4SN-V2 has similar indicators to those on the S5735I-S8U4XN-V2 except that the S5735I-S8T4SN-V2 does not have PoE and USB indicators. For details, see the S5735I-S8U4XN-V2.

external 12 V to 48 V DC power supply or powered by the PAC60S12-AN.

### Heat Dissipation System

The switch has no fans and uses natural heat dissipation.

### Technical Specifications

**Table 4-1339** Technical specifications of the S5735I-S8T4SN-V2

| Item   | Specification   |
|--|---|
| Dimensions without packaging (H x W x D) [mm(in.)]               | Basic dimensions (excluding the parts protruding from the body): 150.0 mm x 46.0 mm x 133.0 mm (5.91 in. x 1.81 in. x 5.24 in.)<br>Maximum dimensions (the depth is the distance from ports on the front panel to the parts protruding from the rear panel): 162.0 mm x 46.0 mm x 142.0 mm (6.38 in. x 1.81 in. x 5.59 in.) |
| Dimensions with packaging (H x W x D) [mm(in.)]                  | 235.0 mm x 90.0 mm x 205.0 mm (9.25 in. x 3.54 in. x 8.07 in.)  |
| Chassis height [U]   | 3.65 U  |
| Chassis material   | Metal   |
| Weight without packaging [kg(lb)]                                | 0.95 kg (2.09 lb)   |
| Weight with packaging [kg(lb)]                                   | 1.23 kg (2.71 lb)   |
| Typical power consumption [W]                                    | 17.44 W   |
| Typical heat dissipation [BTU/hour]                              | 59.48 BTU/hour  |
| Maximum power consumption [W]                                    | 18.59 W   |
| Maximum heat dissipation [BTU/hour]                              | 63.40 BTU/hour  |
| Static power consumption [W]                                     | 14.10 W   |
| MTBF [years]   | 104.86 years  |
| Availability   | > 0.99999   |
| Noise at normal temperature (acoustic power) [dB(A)]             | Noise-free (no fans)  |
| Noise at normal temperature (acoustic pressure) [dB(A)]          | Noise-free (no fans)  |
| Number of card slots   | 0   |
| Number of power slots  | 0   |
| Number of fans modules   | 0   |
| Redundant power supply   | 1+1   |
| Long-term operating temperature [°C(°F)]                         | 0–1800 m (0–5906 ft.) altitude, industrial optical modules: <ul style="list-style-type: none"> <li>Sealed cabinet: –40°C to +60°C (–40°F to +140°F)</li> <li>Vented cabinet (≥ 80 LFM): –40°C to +70°C (–40°F to +158°F)</li> <li>Blower-equipped cabinet (≥ 200 LFM): –40°C to +75°C (–40°F to +167°F)</li> </ul>          |
| Restriction on the operating temperature variation rate [°C(°F)] | When the altitude is 1800-5000 m (5906-16404 ft.), the highest operating temperature reduces by 1°C (1.8°F) every time the altitude increases by 220 m (722 ft.).   |

|                                       |                               |
|---------------------------------------|-------------------------------|
| Long-term operating altitude [m(ft.)] | 0–5000 m (0–16404 ft.)        |
| Storage altitude [m(ft.)]             | 0-5000 m (0-16404 ft.)        |
| Power supply mode                     | DC external                   |
| Rated input voltage [V]               | DC input: 12 V DC to 48 V DC  |
| Input voltage range [V]               | DC input: 9.6 V DC to 60 V DC |
| Maximum input current [A]             | 2 A                           |
| Memory                                | 2 GB                          |
| Flash memory                          | Physical space: 1 GB          |
| Console port                          | RJ45                          |
| Eth Management port                   | Not supported                 |

About Us



How to Buy



Partner



Resources



Quick Links



HUAWEI eKit App



HUAWEI eFly App



Copyright © 2026 Huawei Technologies Co., Ltd. All rights reserved.

[Privacy](#) [Terms of use](#) [Cookies](#) [Cookie Settings](#) [Report content](#)