

## ABS Lanyard - temporary lifeline system

Sharp edge-tested kernmantle cable with rope shortener, energy absorber and carabiner hook



Our ABS Lanyard - temporary lifeline system was specially designed for horizontal implementation on flat and pitched roofs. This connector is based on a kernmantle cable which makes it considerably lighter, more compact and more user-friendly than traditional systems using polyamide cables.

And that is not all our ABS Lanyard - temporary lifeline system has to offer. Most common anchorage devices deploy twisted cables. Not only are these much heavier than kernmantle ones - they also wear much faster due to their susceptibility to kinking. The kernmantle cable of our ABS Lanyard - temporary lifeline system, on the other hand, is significantly more robust and resistant to fatigue. Kernmantle cables never have any problems with kinking - and because our ABS Lanyard - temporary lifeline system absorbs less moisture than its twisted polyamide contemporaries, it offers greater weather resistance.

More advantages of our ABS Lanyard - temporary lifeline system: Firstly, this system has been approved for a maximum distance of 21 meters between two posts. Secondly, the kernmantle cable twists far less than a traditional cable, thus reducing the fall distance.

Our ABS Lanyard - temporary lifeline system was specially developed to secure up to 4 individuals simultaneously. A carabiner hook with a special screw lock is attached to one end of the kernmantle cable. This allows it to be quickly and easily attached to an anchorage point. A cable clamp is attached to the other end of the cable - serving as a tensioning element. In addition, our ABS Lanyard is also equipped with additional carabiner hooks which run freely along the cable and can be attached to intermediate supports.

Our ABS Lanyard - temporary lifeline system is available in the following standard lengths: 15, 23 and 30 m. Use this connector system in combination with an ABS RopeGlide roller glider and a self-retracting lifeline for the perfect safety solution.

- EN 795:2012 & CEN/TS 16415:2017
- EN 353-2:2002 & EN 358:2000
- Sharp edge-tested kernmantle cable (Ø 12 mm) acc. RFU CNB/P/11.075
- Incl. energy absorber and adjustable rope shortener
- Secures up to 4 individuals
- Incl. spliced carabiner hooks which move freely along the cable (15 m = 1 hook, 23 m = 2 hooks, 30 m = 3 hooks)

---

### PPE Type

Verbindungsmittel

### Certification

DIN EN 795      Sharp edge-tested

### Max. no. of users

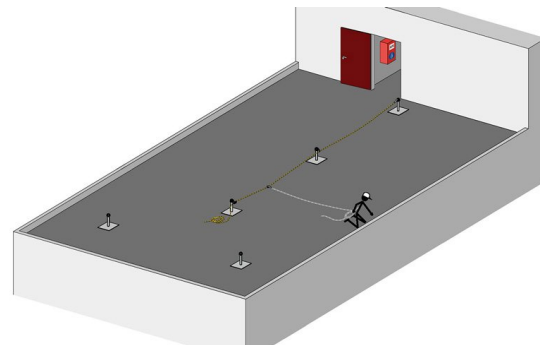
Four Persons

### Application

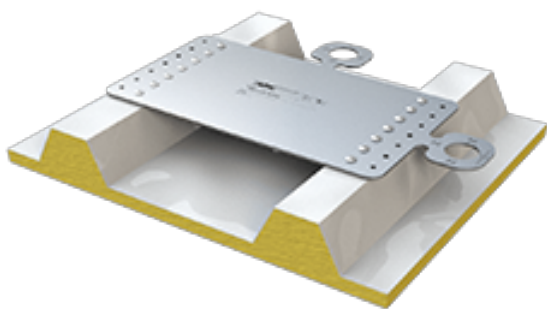
Flat Roofs      Pitched Roof



## Accessories / Components



## Accessories / Components



### ABS-Lock X-Flat

Anchorage point - designed for riveting onto a sandwich roof or trapezoidal sheeting



### ABS B-Lock 2 m - 12 m (strap)

Self-retracting lifeline with sharp edge-tested strap

