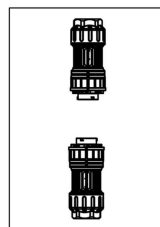


2301512002_AC Connector(5C,40A,female)



Instruction



Wrench



Notes:

Electric testing:

1. Rated Voltage: 600V;
2. Rated Current: 40A;
3. Contact Resistance: $\leq 50\text{m}\Omega$;
4. Dielectric Withstanding Voltage: 3000V
5. Insulation resistance: $\geq 500\text{M}\Omega$;

Mechanical property:

1. Mating Cycle: ≥ 500 次;
2. Applicable cables: 2.5mm², 4mm², 10AWG, 12AWG, 14AWG.

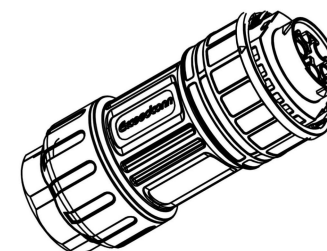
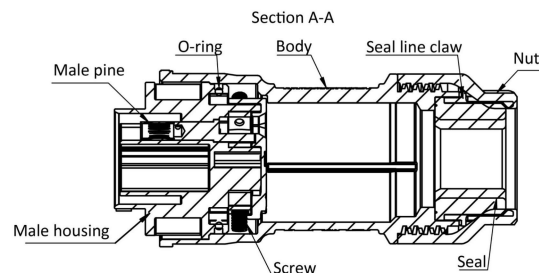
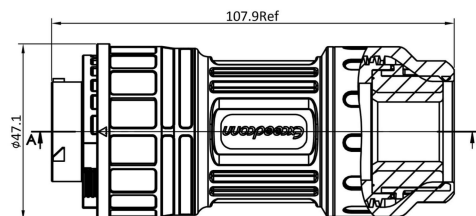
Environmental performance:

1. Waterproof Rate: IP67 1m-30min(After mating);
2. Operating Temperature: -40°C~105°C

Others:

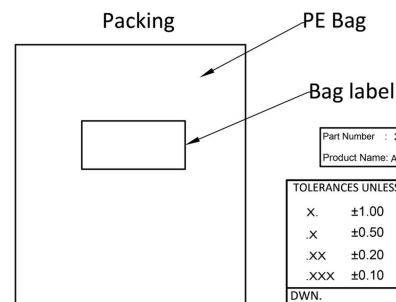
1. Type No: EN200-2205-101

CHANGE NO.	CHANGE CONTENTS	REV.	NAME/DATE



Two seals
 Seal inner diameter $\phi 21$ (black)
 For cable size: 4mm² or 10AWG

 Seal inner diameter $\phi 16$ (grey)
 For cable size: 2.5mm², 12AWG or 14AWG



TOLERANCES UNLESS OTHERWISE SPECIFIED		MATERIAL	
.X	± 1.00	X	$\pm 3.00^\circ$
.X	± 0.50	.X	$\pm 2.00^\circ$
.XX	± 0.20	.XX	$\pm 1.00^\circ$
.XXX	± 0.10	.XXX	$\pm 0.50^\circ$

DWN.	UNIT	mm		
CHK.	SHEET	OF	REV.	DRAWING NO.

NAME
AC Connector (5C,40A,female)