

LONGI EcoLife Anti-Glare Pro

LR7-54HVB

455~475M

Pure-Black Glare-Free,
Neighbour-Friendly



Anti-Glare Pro

< 20,000 cd/m² Aviation-Compliant
TÜV AAA Glare Rating Certified
* Certified by TÜV Rheinland | Verified by SPF Lab & Fraunhofer ISE. Subject to test reports.

Micro-structured
glass



Premium

Better
appearance

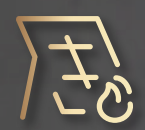
Premium
black



HW4

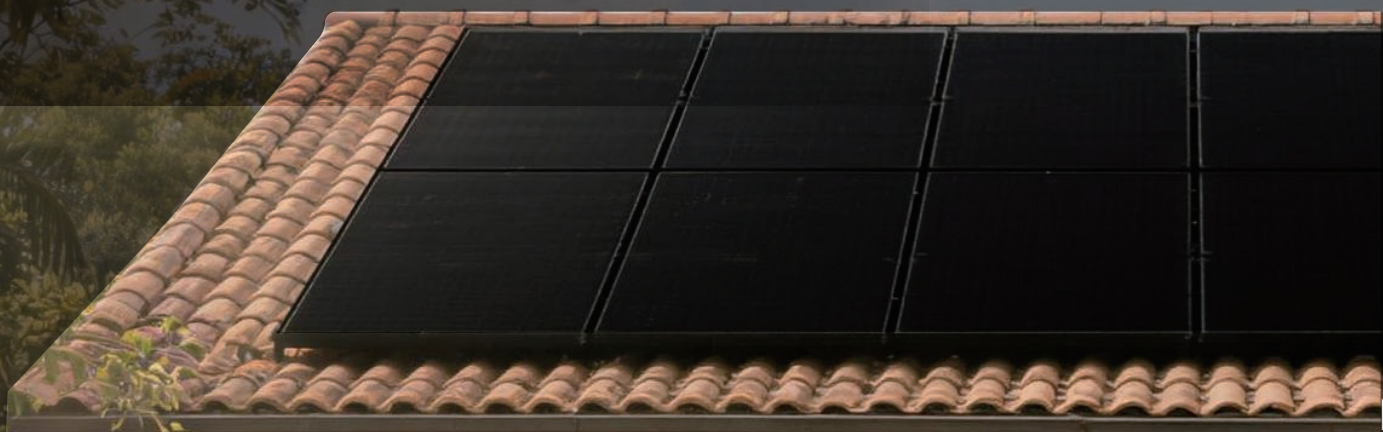
Hail
Resistance

3.2mm
Tempered Glass



60°C
Lower Temperature
under Shade

Prevent
Overheating



SPF INSTITUT FÜR SOLARTECHNIK



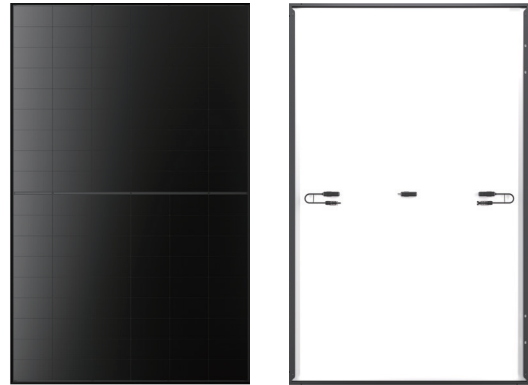
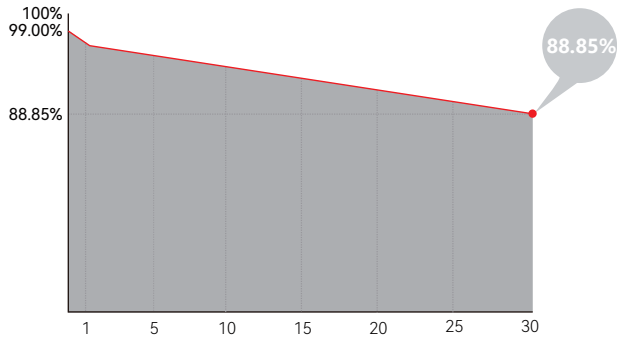
HPBC
2.0

30
YEAR
WARRANTY
Power | Product

22.78% MAX MODULE EFFICIENCY	0~3% POWER TOLERANCE	1% FIRST YEAR POWER DEGRADATION	0.35% YEAR 2-30 POWER DEGRADATION	BC-CELL LOWER OPERATING TEMPERATURE
--	--------------------------------	---	---	---

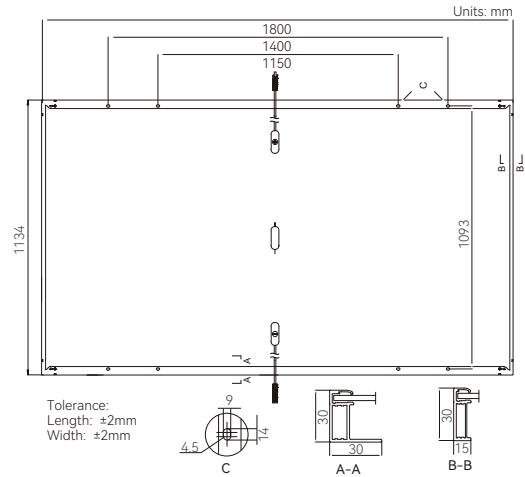
Additional Value

30-Year Power Warranty



Mechanical Parameters

Cell Orientation	108 (6×18)
Junction Box	IP68
Output Cable	4mm ² ; +400/-200mm/±1200mm length can be customized
Glass	Single glass, 3.2mm Anti-glare tempered glass
Frame	Black anodized aluminum alloy frame
Weight	21.6 kg
Dimension	1800×1134×30mm
Packaging	36pcs per pallet / 216pcs per 20'GP / 864pcs per 40'HC



Electrical Characteristics

STC: AM1.5 1000W/m² 25°C Test uncertainty for Pmax: ±3%

Module Type	LR7-54HVB-455M	LR7-54HVB-460M	LR7-54HVB-465M	LR7-54HVB-470M	LR7-54HVB-475M
Testing Condition	STC	STC	STC	STC	STC
Maximum Power (Pmax/W)	455	460	465	470	475
Open Circuit Voltage (Voc/V)	39.74	39.85	39.96	40.07	40.18
Short Circuit Current (Isc/A)	14.63	14.73	14.83	14.93	15.03
Voltage at Maximum Power (Vmp/V)	32.69	32.81	32.93	33.05	33.16
Current at Maximum Power (Imp/A)	13.92	14.03	14.13	14.23	14.33
Module Efficiency(%)	22.29	22.54	22.78	23.03	23.27

Operating Parameters

Module [T98] max	70°C
Power Output Tolerance	0~3%
Maximum System Voltage	DC1500V (IEC)
Maximum Series Fuse Rating	25A
Nominal Operating Cell Temperature	45±2°C
Protection Class	Class II
Fire Rating	IEC Class C

Mechanical Loading

Designed mechanical load	1600Pa/1600Pa
Front Side Maximum Static Loading	5400Pa
Rear Side Maximum Static Loading	2400Pa
Hail Class	HW4 ² (TBD)

Temperature Ratings (STC)

Temperature Coefficient of Isc	+0.050%/°C
Temperature Coefficient of Voc	-0.200%/°C
Temperature Coefficient of Pmax	-0.260%/°C