

SIMPO Bracket Package



SIMPO Bracket x 2



Bolt M4*14mm (8pcs)

SIMPO Bracket Installation

Back Part Installation

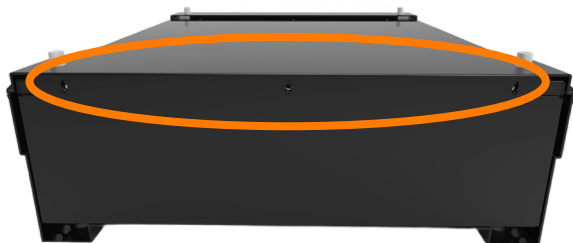
Step 1:

Remove three screws on the back of top cover.



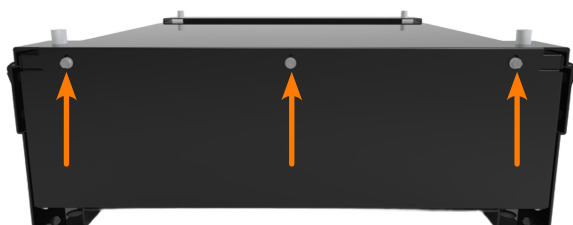
Step 2:

Install the bracket to battery.



Step 3:

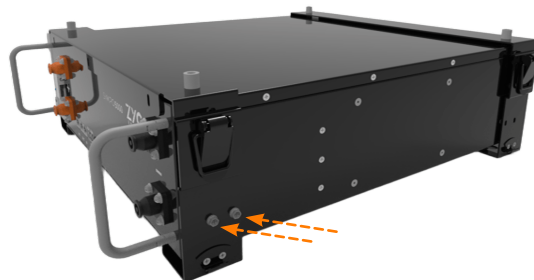
Please use three of bolt M4 to fix bracket to the back of the battery with a torque of 3.5 Nm.



Front Part Installation

Step 4:

Remove the hangers from two sides of battery. Then install bracket to front and tighten two bolt M4 on each side with a torque of 3.5 N·m.

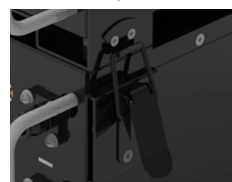


Step 5:

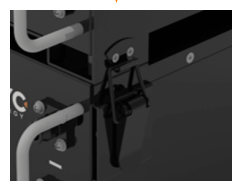
Stack up the modules and lock.



Pull up the buckle



Press down



Here 'Pata'