



GOODWE
YOUR SOLAR ENGINE



POWER LIMIT SOLUTIONS

ON-GRID INVERTER / HYBRID INVERTER

POWER LIMIT SOLUTION FOR ON GRID INVERTER

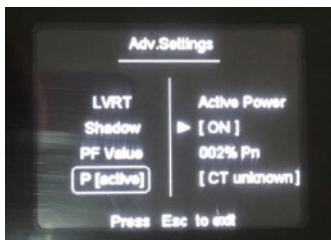
OUTPUT POWER LIMIT

LIMIT THE MAX. GENERATION
OF SOLAR SYSTEM
LIMIT THE MAX. OUTPUT
CURRENT OF THE INVERTER

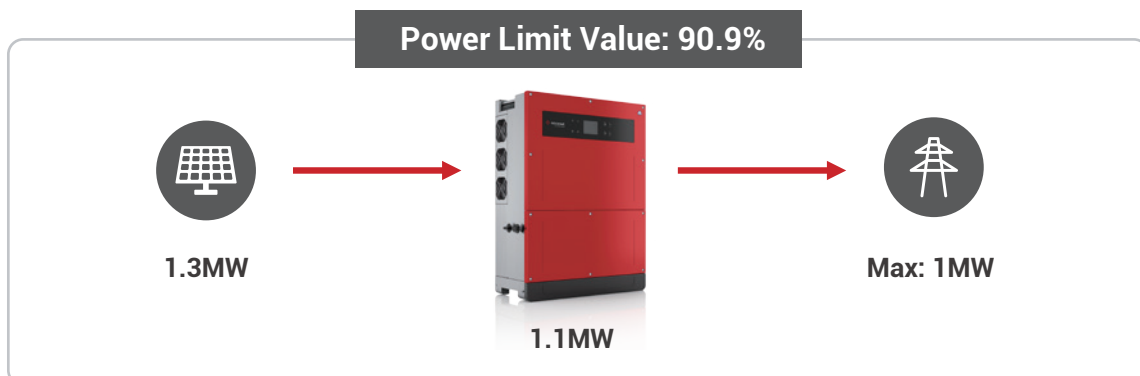
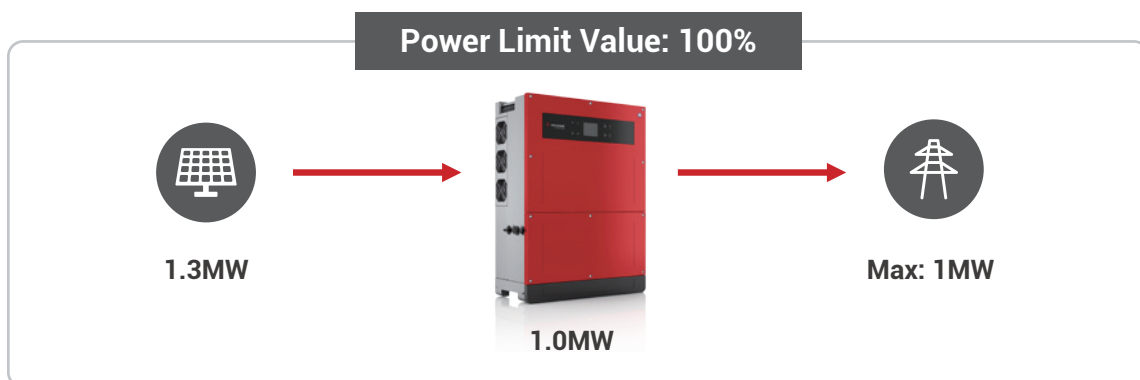
EXPORT POWER LIMIT

LIMIT THE MAX. POWER
EXPORTED TO THE
GRID AFTER LOADS
CONSUMPTION

/ Output Power Limit



- Limit the inverter output power, applicable to DC oversizing and no loads connected scenario
- The limited percentage is that of the inverter Max. output power
- The limitation percentage should be set on inverter display
- No need for additional devices



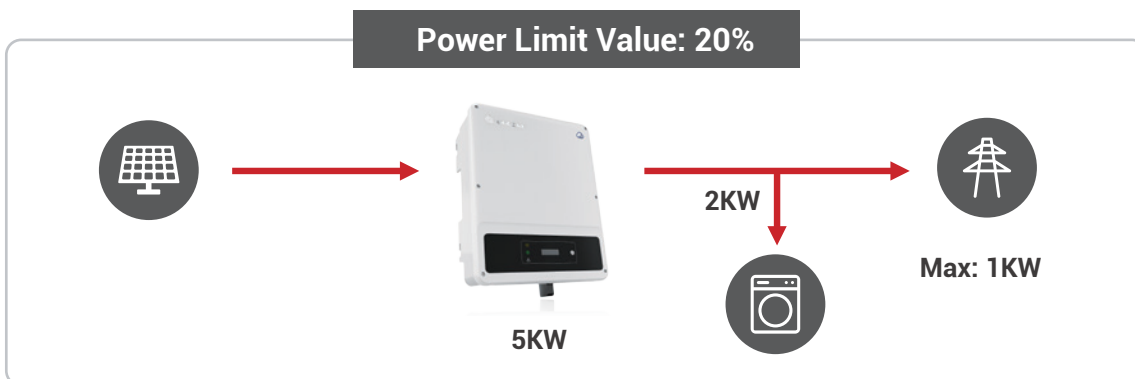
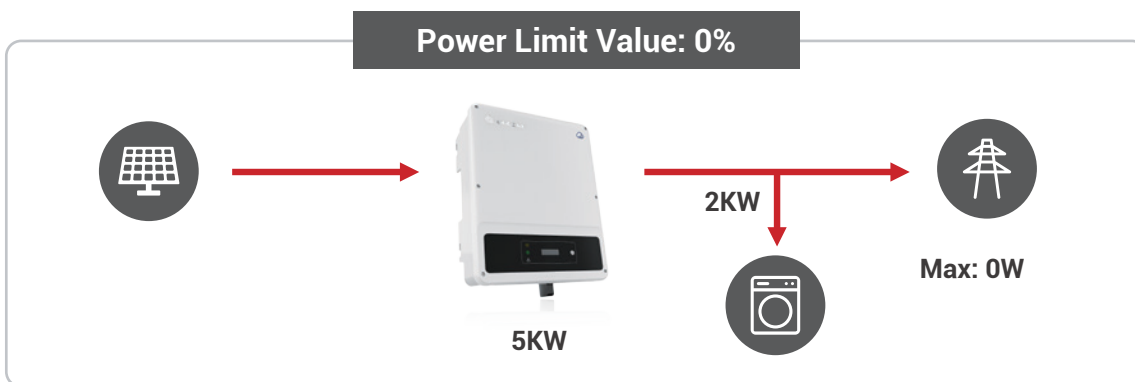


/ Export Power Limit

SINGLE PHASE SYSTEM

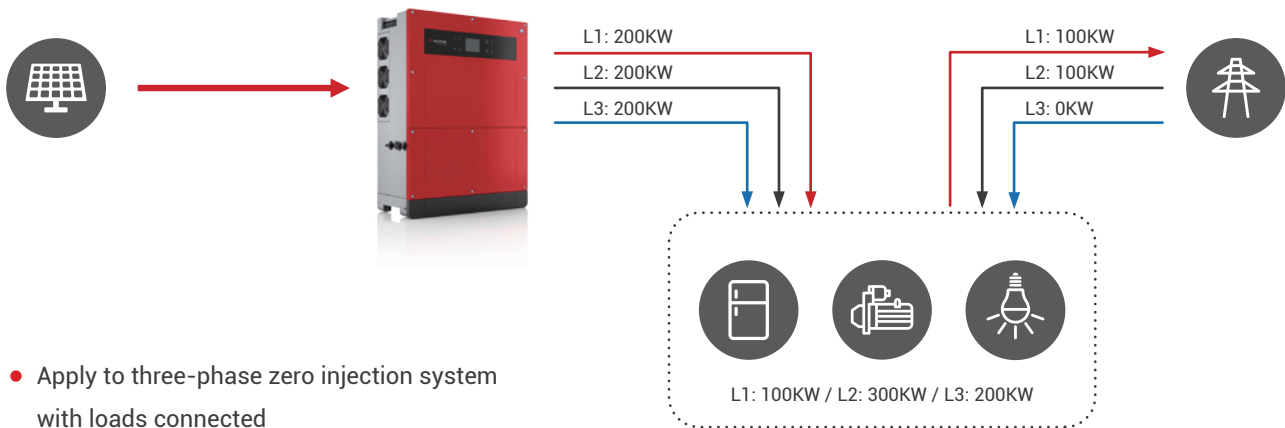


- Applicable to single-phase systems with loads connected
- The limitation percentage should be set on inverter display
- The limited percentage is that of power exported to the grid
- An additional device is needed to execute this function



/ Export Power Limit

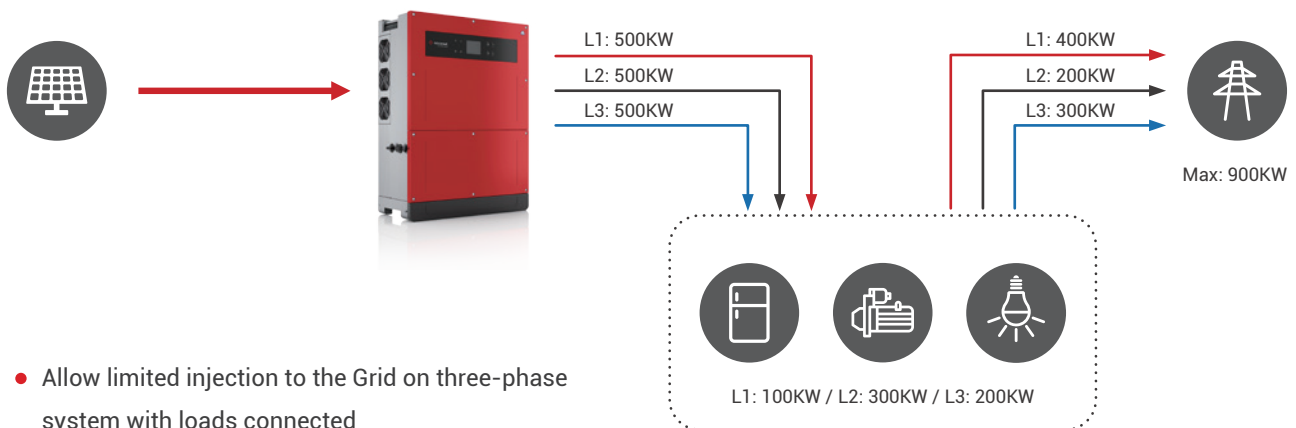
THREE PHASE SYSTEM—Zero Injection



- Apply to three-phase zero injection system with loads connected
- On system of single inverter, the export limit percentage is set on inverter display
- An additional device is needed to execute this function
- On system of multiple inverters, the export limit percentage is set on the software called Promate

/ Export Power Limit

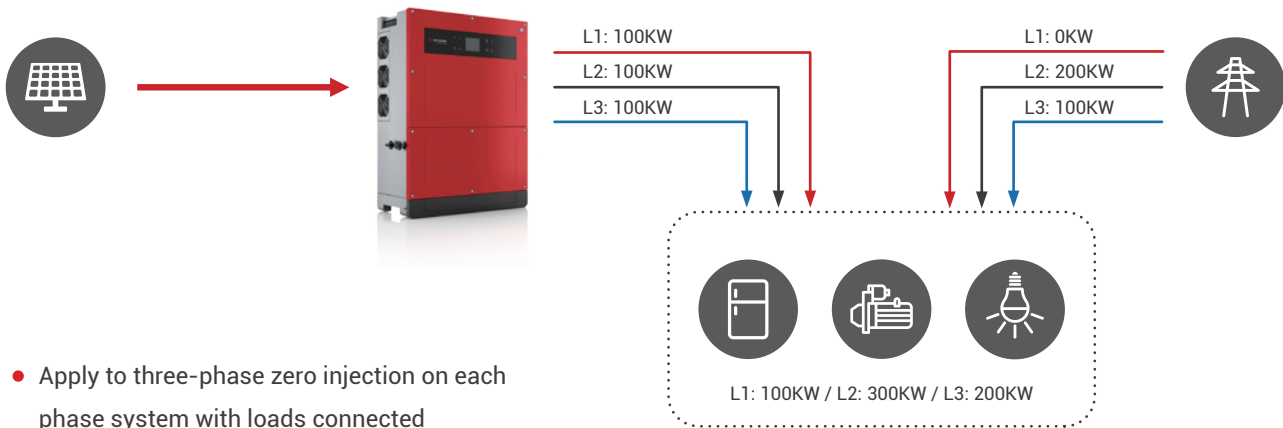
THREE PHASE SYSTEM—Certain Amount of Injection



- Allow limited injection to the Grid on three-phase system with loads connected
- On system of single inverter, the export limit percentage is set on inverter display
- An additional device is needed to execute this function
- On system of multiple inverters, the export limit percentage is set on the software called Promate

/ Export Power Limit

THREE PHASE SYSTEM—Zero Injection on each phase



- Apply to three-phase zero injection on each phase system with loads connected
- On system of single three-phase inverter, the export limit percentage is set on inverter display
- On system of multiple inverters, the export limit percentage is set on the software called Promate
- An additional device and special firmware are needed to execute this function



HOW TO ACHIEVE EXPORT POWER LIMIT FUNCTION ON DIFFERENT SCENARIOS

/ How to Distinguish the Inverter with ARC (Anti Reverse Current) or without ARC Function

NS / DNS / SDT G1 / DT



Without ARC



With ARC

XS / MS / SDT G2



Without ARC



Without ARC

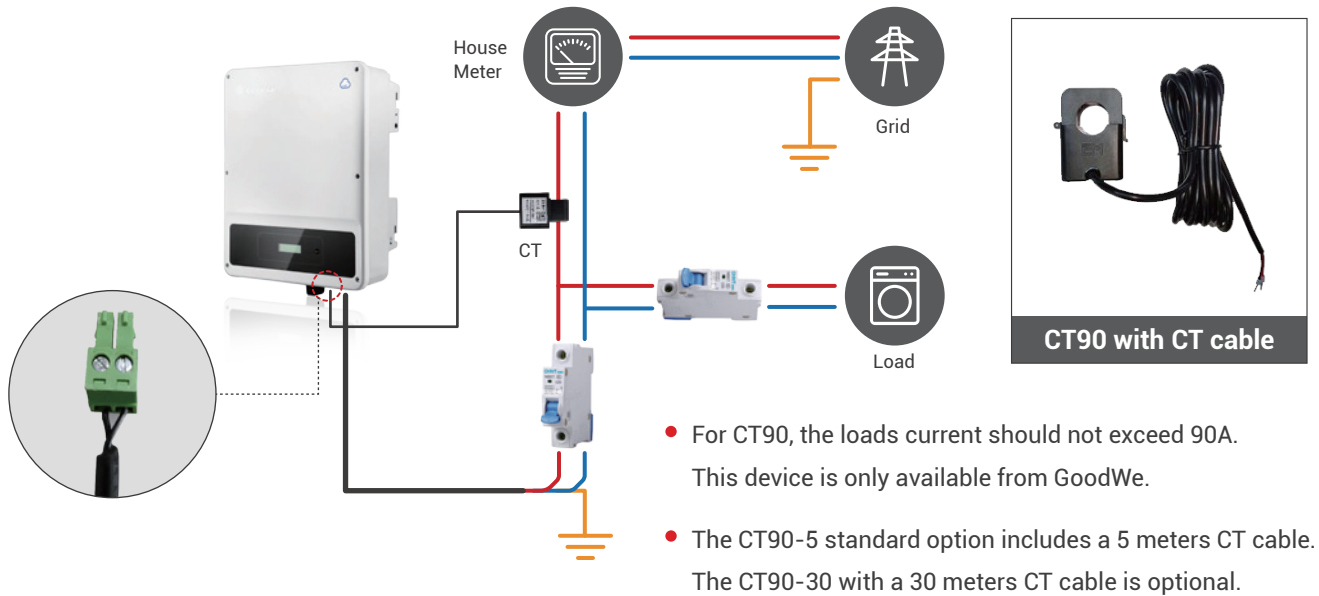


With ARC

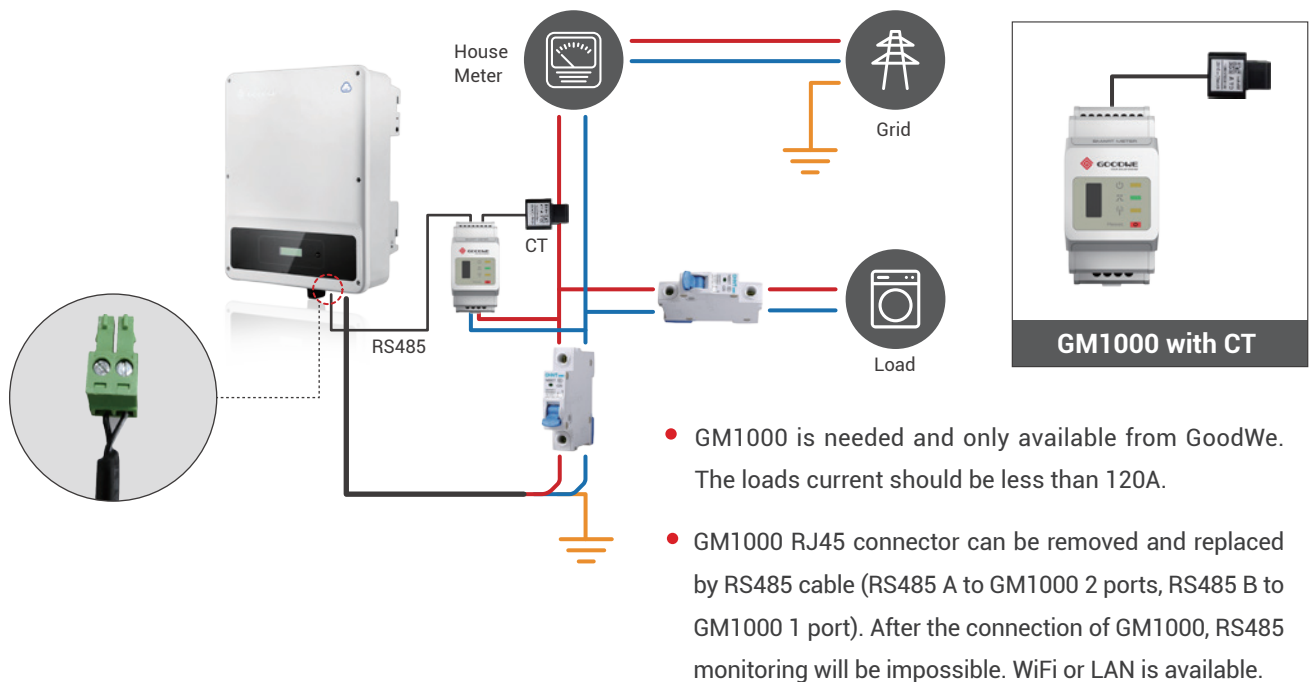
Functional combinations for this plant

- ① ARC + DRED / Remote shutdown
- ② Only Remote shutdown
- ③ Nothing
- ④ On single-phase inverters, the ARC function is incompatible with Tigo's CCA function. On three-phase inverters, these functions can be simultaneously applied.

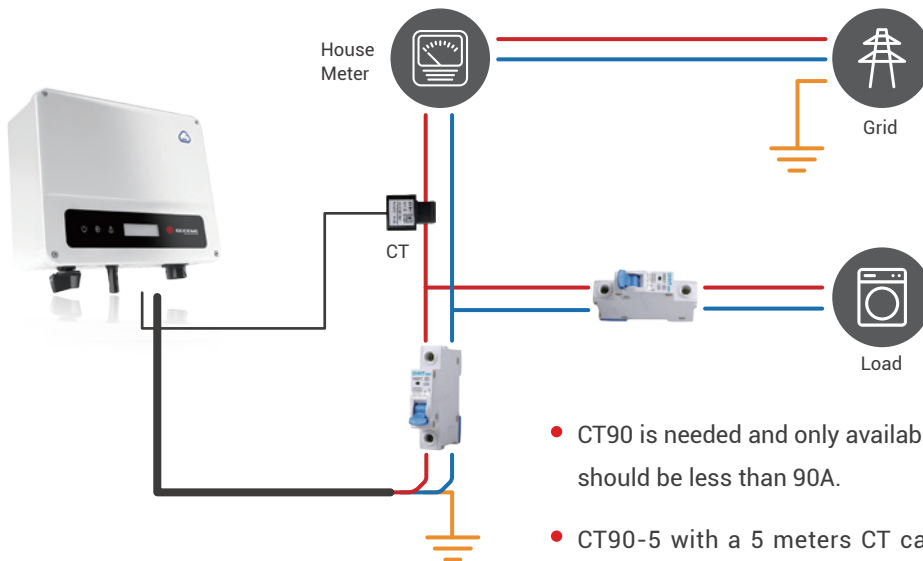
/ Single NS / DNS Inverter with ARC Solution



/ Single NS / DNS Inverter without ARC Solution

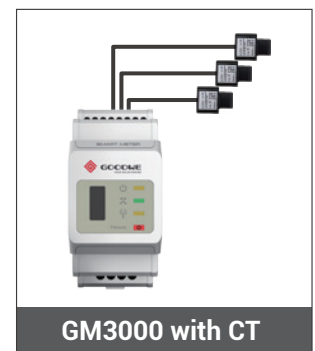
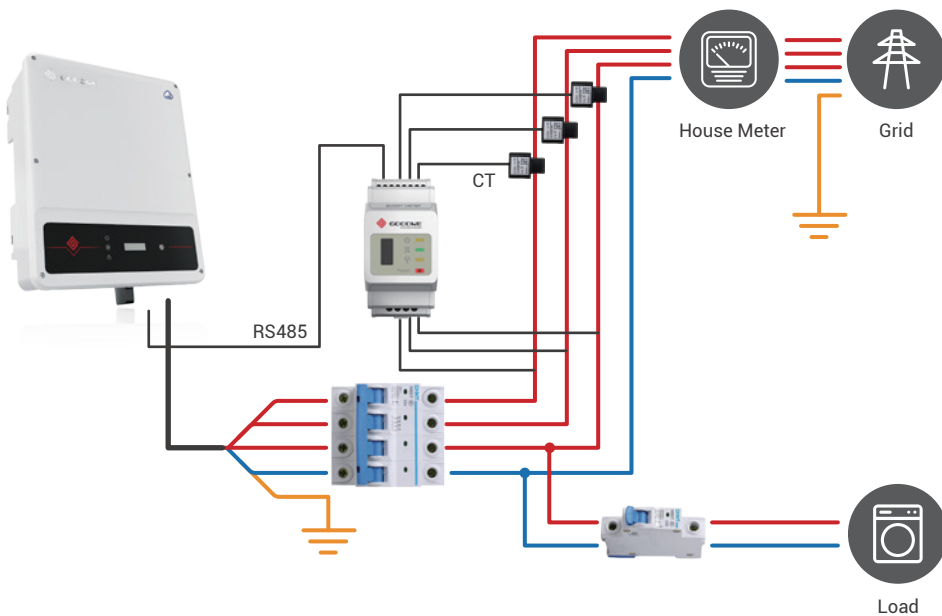


/ Single XS / MS Inverter with ARC Solution

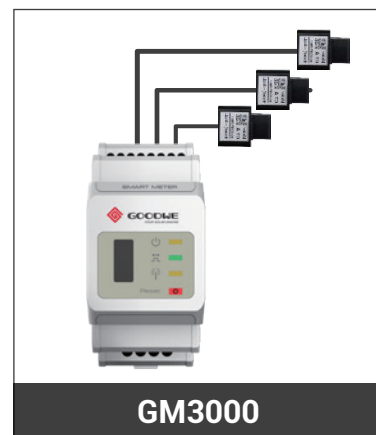


- CT90 is needed and only available from GoodWe. The loads current should be less than 90A.
- CT90-5 with a 5 meters CT cable is standard, CT90-30 with a 30 meters CT cable is optional. XS / MS without ARC function is impossible to achieve export power limit function.

/ Single SDT G1 / SDT G2 / DT with ARC or SMT / MT Inverter Solution

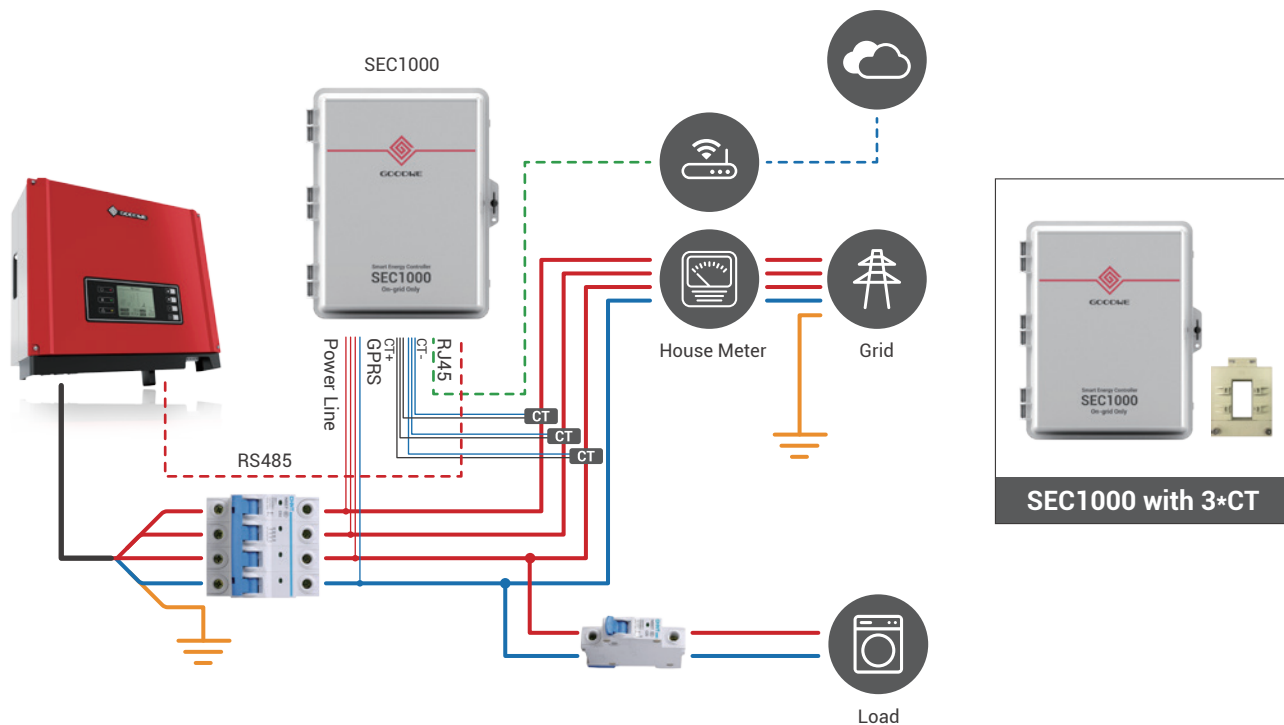


- GM3000 is needed and only available from GoodWe. The loads current should be less than 120A on each phase.
- GM3000 RJ45 connector can be removed and replaced by RS485 cable (RS485 A to GM3000 2 port, RS485 B to GM3000 1 port).
- SDT G2 without ARC function is impossible to achieve export power limit function.
- Because the output current of GW80K-MT & GW80KLBF-MT is higher than 120A, the solution for these two models should be SEC1000.



- CT diameter of CT90 / GM1000 / GM3000 is 16mm
- Reaction time of CT90 / GM1000 / GM3000 is less than 100ms
- The Max. current for CT90 is 90A. The Max. current for GM1000 and GM3000 is 120A on each phase. If the loads total current or main breaker current is higher than 90A or 120A, you must choose SEC1000 instead of CT90 / GM1000 / GM3000.

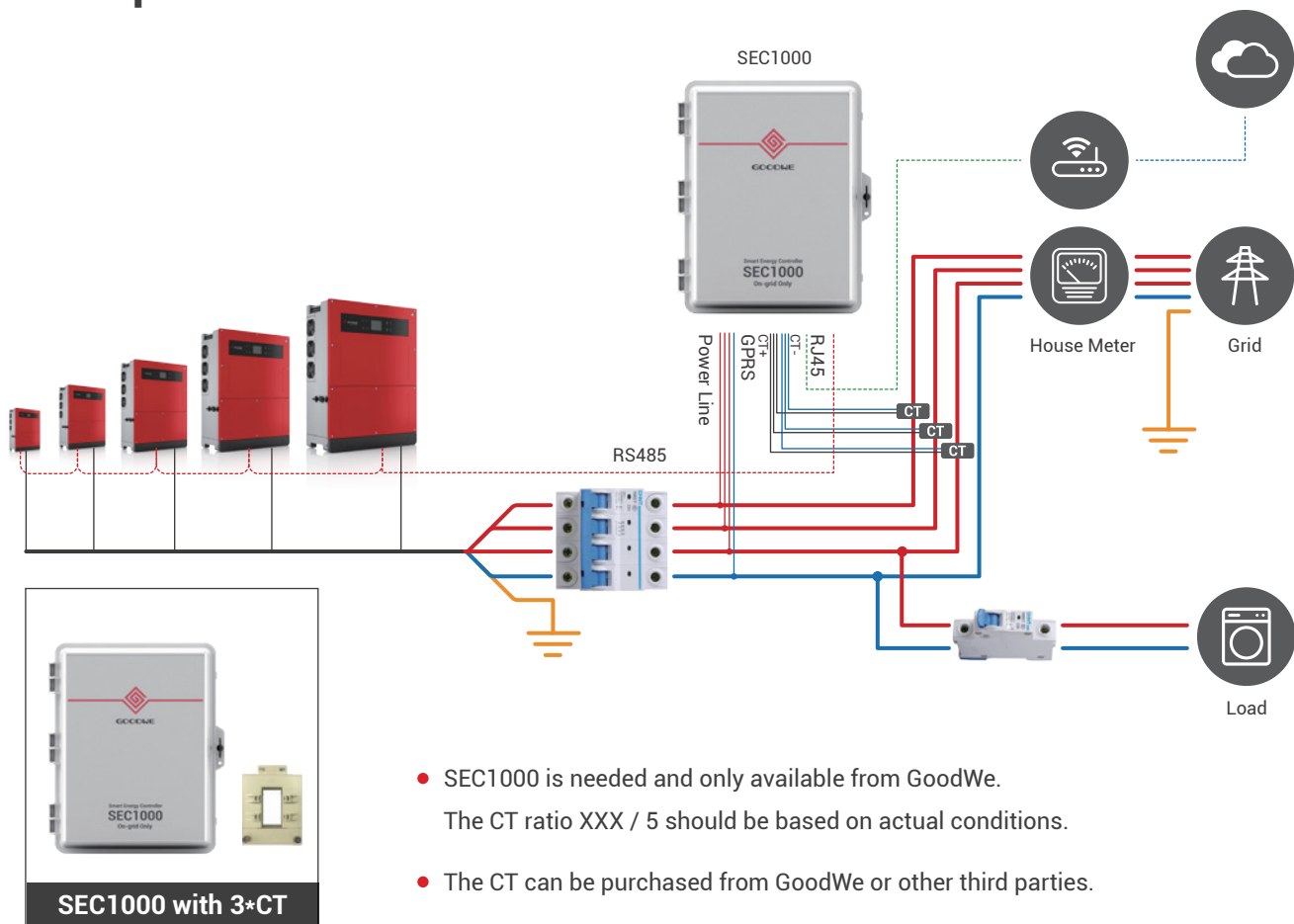
/ Single SDT G1 / DT Inverter without ARC Solution



- SEC1000 is needed and only available from GoodWe. The CT ratio should be 250 / 5A on each phase.
- The CT can be purchased from GoodWe or other third parties.

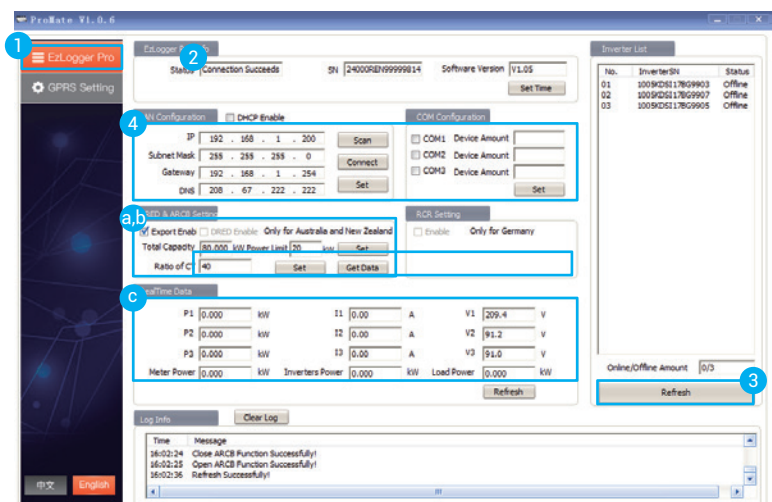
/ SDT G1 / SDT G2 / DT / SMT / MT

Multiple Inverters Scenario Solution



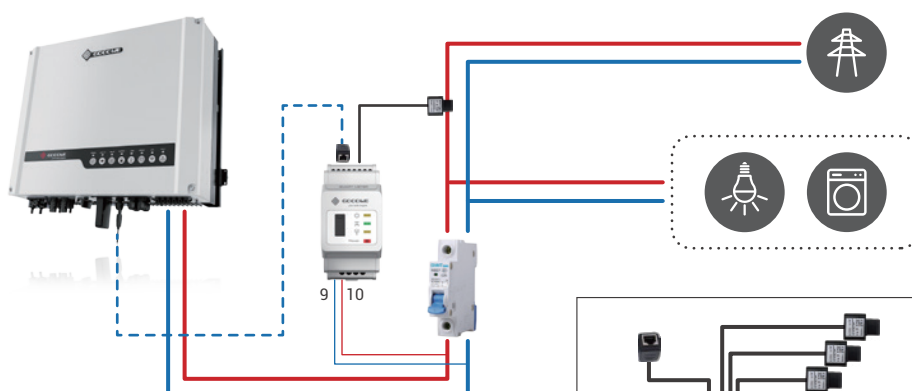
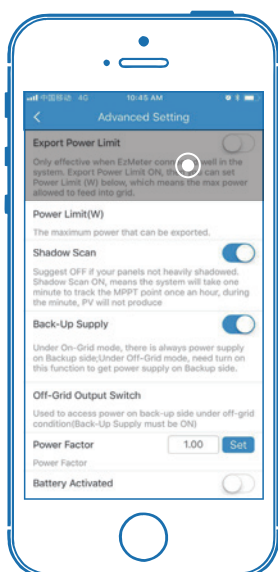
/ Promate Software Setting to Enable Export Power Limit Function for Multiple Inverters

1. Select "EzLogger Pro"
2. Wait until it shows "Connection Succeed" and serial No. & Version
3. Click 'Refresh' to check inverter SN
4. Instructions to configure monitoring
 - a. Set system parameters and CT ratio
 - b. Select "Export Enab"
 - c. Power, current and phase information will be displayed



HYBRID INVERTER EXPORT POWER LIMIT SOLUTION

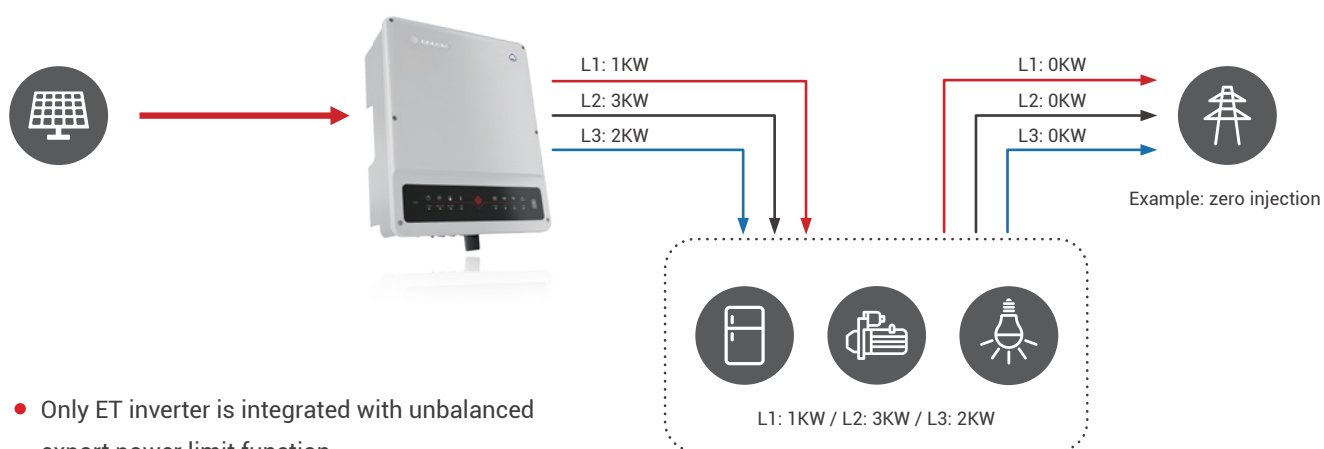
/ Hybrid Inverter System Diagram



- Only hybrid inverter is integrated export power limit function
- A GoodWe smart meter is required
- Need to be set in PV Master advanced setting



/ Unbalanced Export Power Limit on Each Phase for ET Series



- Only ET inverter is integrated with unbalanced export power limit function
- Max. unbalanced power on each phase is 3.3KW for GW10K-ET
- Unbalanced power limit on each phase is not only for on grid output, but also available for backup output
- A GoodWe smart meter is required
- Need to be set in PV Master advanced setting

GoodWe (China)

No. 90 Zijin Rd., New District, Suzhou, 215011, China
T: +86 (0) 512 6958 2201
sales@goodwe.com (Sales)
service@goodwe.com (Service)

GoodWe (Brazil)

Rua Abelardo 45, Recife/PE, 52050-310
T: +55 81 991239286
sergio@goodwe.com
servico.br@goodwe.com

GoodWe (UK)

6 Dunhams Court, Dunhams Lane, Letchworth Garden City,
SG6 1WB UK
T: +44 (0) 333 358 3184
enquiries@goodwe.com.uk
service@goodwe.com.uk

GoodWe (Italy)

Via Cesare Braico 61, 72100 Brindisi, Italy
T: +39 338 879 38 81; +39 831 162 35 52
valter.pische@goodwe.com (sales)
operazioni@topsenenergy.com; goodwe@arsimp.it (service)

GoodWe (Australia)

Level 14, 380 St. Kilda Road, Melbourne,
Victoria, 3004, Australia
T: +61 (0) 3 9918 3905
sales@goodwe.com
service.au@goodwe.com

GoodWe (Spain)

Fürstenrieder Str. 279a, 81377 München, Germany
T: +34 661 584870
sales@goodwe.com (Sales)
soporte.es@goodwe.com (Service)

GoodWe (South Korea)

8F Invest Korea Plaza, 7 Heoleung-ro Seocho-gu Seoul Korea (06792)
T: 82 (2) 3497 1066
sales@goodwe.com
Larry.Kim@goodwe.com

GoodWe (Poland)

ul. Częstochowska 140, 62-800 Kalisz, Poland
T: +48 (62) 75 38 087
sales.de@goodwe.com (Sales)
service.pl@goodwe.com (Service)

GoodWe (Germany)

Fürstenrieder Str. 279a 81377 München, Germany
T: +49 8974120210 +49 421 83570-170 (Service)
sales.de@goodwe.com
service.de@goodwe.com

GoodWe (Netherlands)

Franciscusdreef 42C, 3565AC Utrecht, the Netherlands
T: +31 (0) 30 737 1140
sales@goodwe.com
service.nl@goodwe.com

GoodWe (India)

1202, G-Square Business Park, Sector 30A, Opp. Sanpada Railway
Stn., Vashi, Navi Mumbai- 400703
T: +91 (0) 2249746788
sales@goodwe.com
service.in@goodwe.com

GoodWe (Turkey)

Mansuroglu Mah. 286/4 Sk. N:2 K:5 D:31 Defne Plaza Bayraklı / Izmir / TURKEY
T: +90 232 347 73 73
sales@goodwe.com (sales)
service@goodwe.com.tr (service)

GoodWe (Mexico)

Oswaldo Sanchez Norte 3615, Col. Hidalgo, Monterrey, Nuevo Leon,
Mexico, C.P. 64290
T: +52 1 81 2871 2871
sales@goodwe.com
soporte.latam@goodwe.com

GoodWe (Portugal)

Fürstenrieder Str. 279a, 81377 München, Germany
T: +34 661 584870
sales@goodwe.com (Sales)
servico.pt@goodwe.com (Service)

GoodWe (South Africa)

Fürstenrieder Str. 279a, 81377 München, Germany
T: +27 60 719 2956
sales.africa@goodwe.com (Sales)
service.africa@goodwe.com (Service)

Note: The technical data above mentioned may be modified in order to reflect continuous technical innovation and improvements achieved by GoodWe's R & D team. GoodWe has the sole right to make such modification at any time without further notice. GoodWe's customers have the right to request the latest version of GoodWe product datasheets and any commercial contracts that may be signed will be based on the most recent version of the datasheet at the moment of signing the contract.

Copyright © GoodWe Power Supply Technology Co., Ltd. 2020. All rights reserved.
No part of this document may be reproduced or transmitted in any form or by any means without prior written consent from GoodWe Power Supply Technology Co., Ltd.