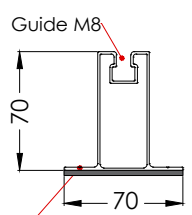
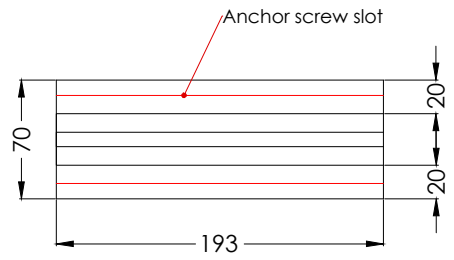
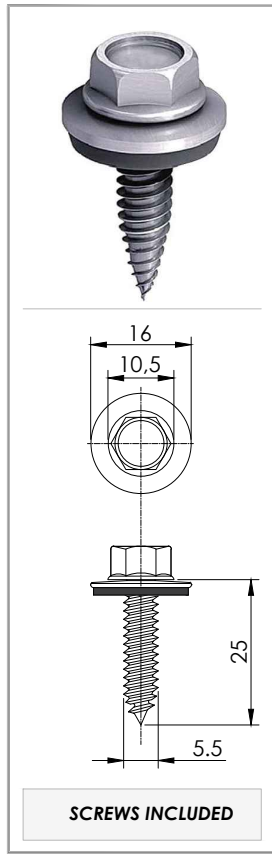
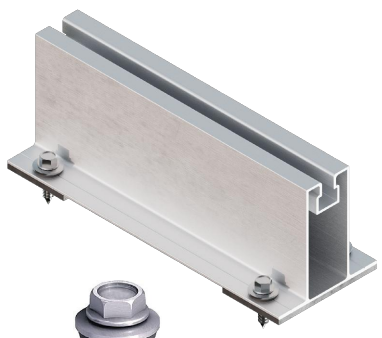


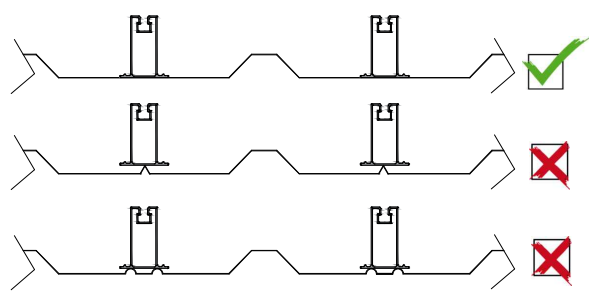
Check valley width; $H \geq 70$ mm
For correct mounting to the sheet metal, it must be completely flat.



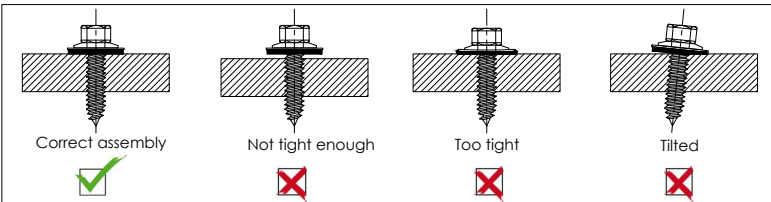
Anchor screw slot



SCREWS INCLUDED



MAXIMUM SHEAR LOADS ($V_{R,k}$) AND PULLOUT LOADS ($N_{R,k}$) IN 1.5 mm ALUMINUM PROFILE + METALLIC SHEET OF A THICKNESS OF 'e'							
e (mm)	0.50	0.60	0.70	0.80	0.90	1.00	1.5
$V_{R,k}$ (kN)	0.79	0.91	1.03	1.15	1.35	1.54	2.44
$N_{R,k}$ (kN)	0.46	0.60	0.75	0.89	1.04	1.18	2.12



Specifications

Description	Fixing for all types of sandwich panel roofs
Screw length	25 mm
Screw diameter	5.5 mm
Anchoring surface	Sheet metal valley
Features	Bimetallic fasteners: A2-70 stainless steel with case-hardened steel tip Guide rail clamping piece: EN AW 6005A T6 (raw or anodised) EPDM
Driving	Hexagonal SW8
Tightening torque	Screw SW8 Max. speed of rotation speed for installation: 1800 rpm
Minimum sheet thickness	0.55 mm

Tools required



Sunfer Estructuras, S.L.U.

Safety:



100% Recyclable

Marking ES19/86524 CE

www.sunferenergy.com

Subject to change without notice. Product illustrations are for illustrative purposes only and may differ from the delivered product.