

# PV-ezRack SolarMatrix

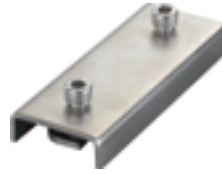
**ER-R-MT/2560**



**MT-rail**

- Project specific customised lengths

**ER-SP-MT**



**Splice for MT Rail**

- Hex Socket Head Bolt A2-70 M8 x 20mm (5/16" x 25/32")
- Diamond Module
- Stainless Steel Splice

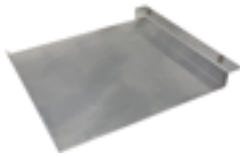
**ER-RC-SM**



**Rail Cross Connector**

- Cross Connector-Base
- Cross Connector-Top
- Washer 10mm (25/64")
- Hex Socket Head Bolt A2-70 10mm (25/64")

**ER-CT-SM**



**Ballast Tray**

- Hex Socket Head Bolt A2-70 M8 x 20mm (5/16" x 25/32")
- Diamond Module

**ER-L-SM**



**Front and Back Leg**

- Front and Back Leg 5°
- Front and Back Leg 10°
- Front and Back Leg 15°
- Front and Back Leg 20°
- Hex Socket Head Bolt A2-70 M8 x 20mm (5/16" x 25/32")
- Diamond Module

**ER-WD-SM**



**Wind Deflectors**

- Wind Deflectors 5°
- Wind Deflectors 10°
- Wind Deflectors 15°
- Wind Deflectors 20°
- Lock Card
- Hex Socket Head Bolt A2-70 M8 x 75mm (5/16" x 2-61/64")
- Hex Socket Head Bolt A2-70 M8 x 20mm (5/16" x 25/32")
- Hex Nut M8mm (5/16") DIN 934 A2
- Diamond Module

**ER-IC-SM**



**Inter Clamp**

- Inter Module Clamp add 28mm (1-7/64")  
35mm (1-3/8"), 40mm (1-37/64"),  
46mm (1-13/16"), 50mm (1-31/32"),  
57mm (2-1/4")
- 28mm (1-7/64") with Hex Socket Head Bolt A2-70 M8x40mm (5/16" x 1-37/64")
- 35mm (1-3/8") with Hex Socket Head Bolt A2-70 M8x45mm (5/16" x 1-49/64")
- 40mm (1-37/64") with Hex Socket Head Bolt A2-70 M8x50mm (5/16" x 1-31/32")
- 46mm (1-13/16") with Hex Socket Head Bolt A2-70 M8x55mm (5/16" x 2-11/64")
- 50mm (1-31/32") with Hex Socket Head Bolt A2-70 M8x60mm (5/16" x 2-23/64")
- 57mm (2-1/4") with Hex Socket Head Bolt A2-70 M8x70mm (5/16" x 2-3/4")

**ER-EC-SM**



**End Clamp**

- End Module Clamp  
28mm (1-7/64")  
30mm (1-3/16")  
32mm (1-17/64")  
35mm (1-3/8")  
38mm (1-1/2")  
40mm (1-37/64")  
42mm (1-21/32")  
46mm (1-13/16")  
48mm (1-57/64")  
50mm (1-31/32")  
57mm (2-1/4")
- Hex Socket Head Bolt A2-70 M8 x 28mm (5/16" x 1-1/10")
- Lock Washer 8.4mm (21/64")