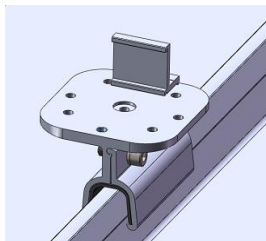
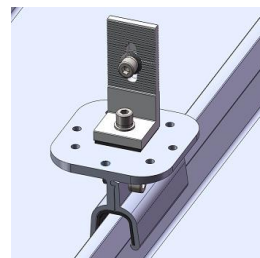


PV-ezRack SolarRoof Klip lok Interface 700

- Assembly -



Install with Cross Connector Clamp



Install with Tin Interface

- Component -



Klip lok Interface 700

Part No.: ER-I-09

- Technical Specification -

Roof Type	Lysaght Klip-Lok 700 Classic, Lysaght Klip-Lok 700 Hi-Strength, Stramit Speed Deck Ultra, Fielders King Klip 700, Straco Topdeck 700, Metroll Metlok 700, Stramit Speed Deck 500
Fixing Method	Fixing on crown/rib of metal sheet
Dimensions	L100mm*W100mm*H61.3mm
Weight	0.382 kg
Packaging	10 units per pack, 4 packs (40 units) per carton
Material	Main parts: AL6005-T5 Fasteners: SUS 304; Rubber Pad: EPDM
Color	Silver (anodized, no less than 10 µm)
Standard	AS NZS1170.2-2011

