

Rack Series

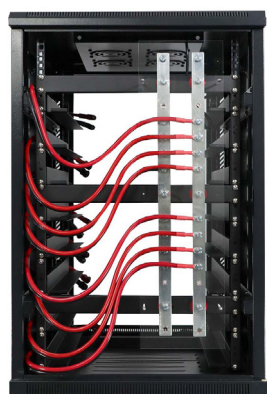
Make your installation quicker and easier when you compliment your batteries with a pre-wired Rack Series cabinet built with high quality Australian components. Easily paralleled, these cabinets can be infinitely scaled to suit any project size in an indoor environment.

 Cabinets can be paralleled

 Ranging from 24kWh – 80kWh

 Pre-wired DC Cabling

 Suits Battery Expansion



PIR8C Cabinet Busbar (rear view)



PIR10C



PIR12C



PIR18C



PIR20C



	PIR8C	PIR10C	PIR12C	PIR18C	PIR20C
Dimensions (H x W x D)	990 x 600 x 800mm	1166 x 600 x 800mm	1400 x 600 x 800mm	1800 x 600 x 800mm	2050 x 600 x 800mm
Colour	Black with glass front door (powder coated)				
Mounting	Floor				
Securing	4 x Caster rollers for positioning and 4 x load-bearing feet				
Feet	Adjustable				
Number of Battery Slots	8	10	12	18	20
Battery Connection Main Isolator	Busbar with M8 Stud 1000A Continuous Rated (M8 nut, bolting and washer supplied)				
Battery Interconnection	Amphenol Surlok connector, 16mm double insulated cable (supplied and installed in cabinet for easy plug and play assembly)				
DC Circuit Breaker	None				
Cable Entry	Top or bottom entry				
IP Rating	IP21				
Weight	95kg	110kg	132kg	174kg	187kg

Specifications correct at time of publication and are subject to change. Refer to website for latest information.