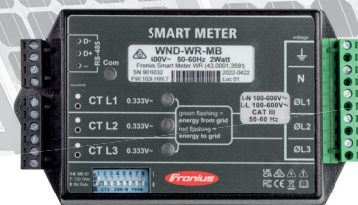


# FRONIUS SMART METER WR

Bi-directional energy meter for feed-in management and energy consumption monitoring

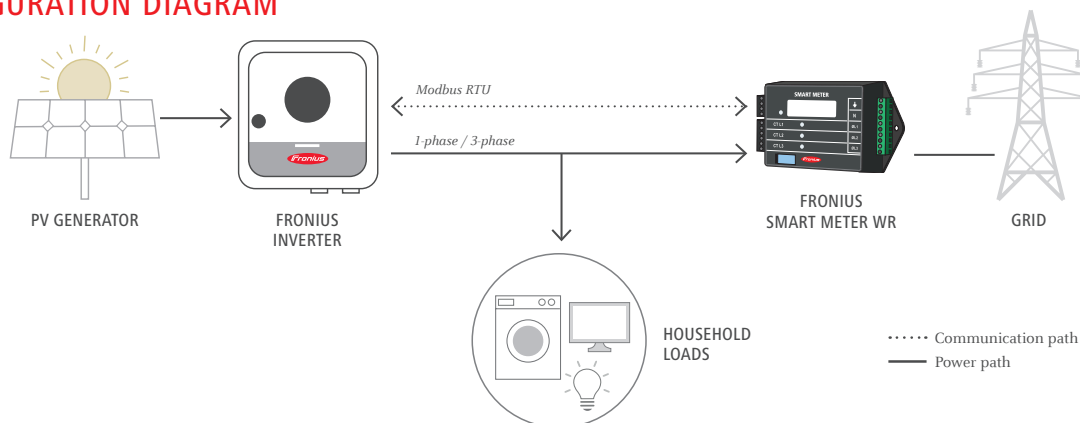


Introducing the Fronius Smart Meter WR, a bi-directional energy meter. Thanks to its high accuracy and fast communication speed via Modbus RTU, the meter is suitable for dynamic feed-in management and grid-tied zero export PV systems. Together with Fronius Solar.web monitoring, the Smart Meter offers a detailed overview of a home or business' energy consumption.

## TECHNICAL DATA FRONIUS SMART METER WR

	FRONIUS SMART METER WR 100-600V - 3
Operating voltage range (line to line)	85 - 690 V
Frequency	45 - 65 Hz
Connections	Euroblock style pluggable terminal blocks (12 AWG / 2.5 mm <sup>2</sup> )
Self-consumption	1.75 W
Maximum rated apparent power	3.75 W
Accuracy	± 0.5 % (see manual for details)
Mounting	Indoor: wall-mounted Outdoors: mount in a switch cabinet with protection class NEMA 3R or 4/IP 66
Temperature range	-40°C to 80°C
Dimensions (W x H x D)	85.1 mm x 153 mm x 38.0 mm (3.35 in x 6.02 in x 1.50 in)
Weight	233 g (8.2 oz)
Interface to inverter	Modbus RTU (RS 485)
Certificates / listings	UL 61010-1, CAN/CSA-C22.2 No. 61010-1-04, IEC 61010-1, EN 61326: 2002, EN61000-4-2, EN61000-4-3, EN 61000-4-4, EN 61000-4-5, EN 61000-4-6, EN 61000-4-11, FCC Part 15 Class B, EN 55022: 1994 Class B
Current transformers	Primary: 1–6000 A / secondary: only suitable for use with transformers with an output voltage of 333 mV
Supported grid types	single-phase grid, three-phase grid with or without neutral conductor
Power supply	Self-supplied, no external power supply required

## CONFIGURATION DIAGRAM



Fronius Australia Pty Ltd.  
90-92 Lambeck Drive  
Tullamarine VIC 3043  
Australia  
pv-sales-australia@fronius.com  
www.fronius.com.au

Fronius UK Limited  
Maidstone Road, Kingston  
Milton Keynes, MK10 0BD  
United Kingdom  
pv-sales-uk@fronius.com  
www.fronius.co.uk

Fronius International GmbH  
Froniusplatz 1  
4600 Wels  
Austria  
pv-sales@fronius.com  
www.fronius.com